

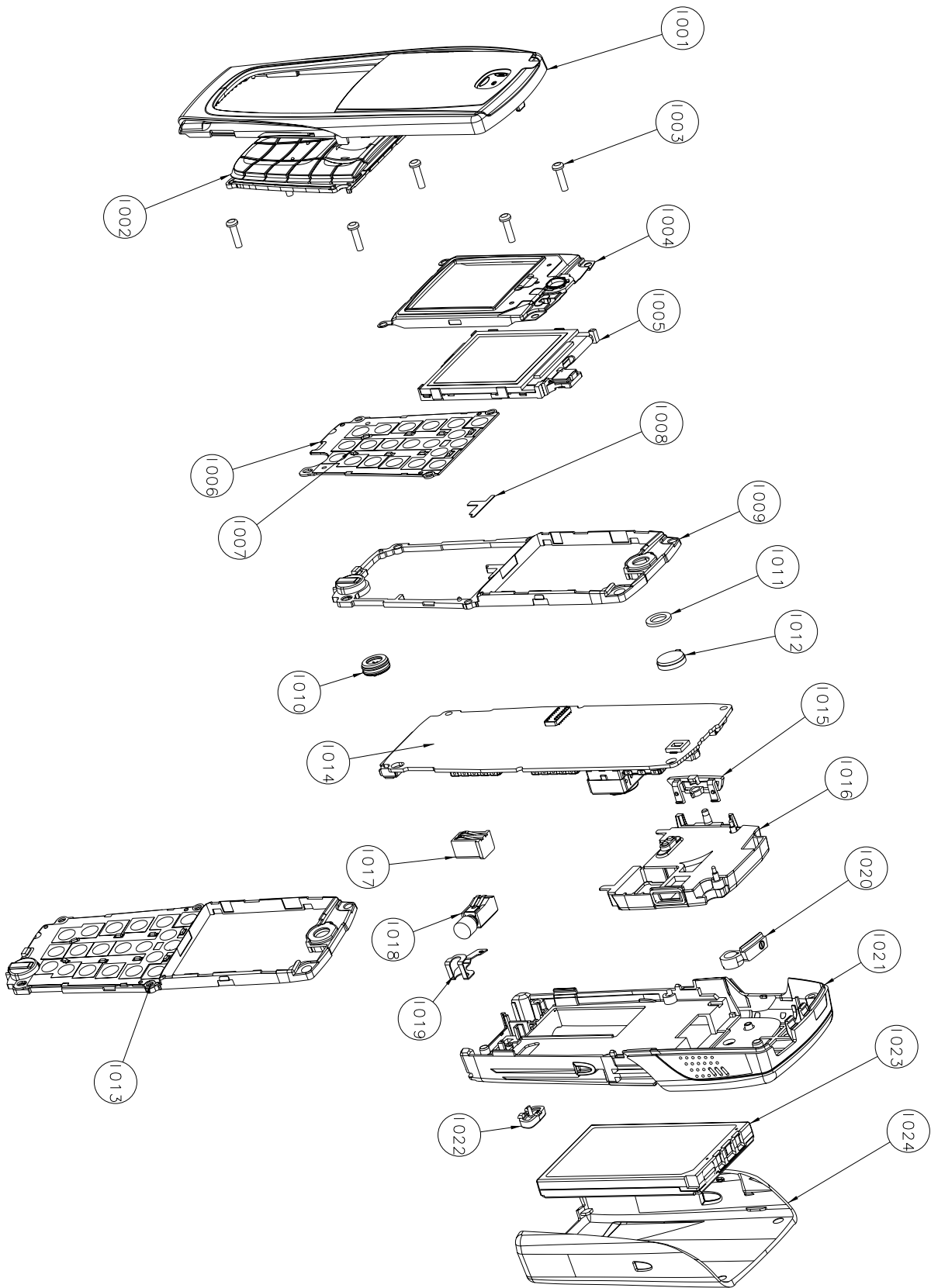
Customer Care Solutions RH-20 Series Transceivers

RH-20 Parts List

Table of Contents

Exploded View of RH-20	3
Assembly Parts of RH-20	4
Parts List with Grid References (RH-20)	5

Exploded View of RH-20



Assembly Parts of RH-20

Item	Code	Description
I001	9458988	A-COVER ASSY DARK GREY DMC06198
	9458986	A-COVER ASSY GREY DMC06198
		More to come.
I002	9790934	KEYMAT ASSY STROKE DARK GREY
	9790935	KEYMAT ASSY STROKE GREY DMC06201
		More to come.
I003	6290107	SCREW
I004	9517291	DISPLAY SHIELD ASSEMBLY DMC06356
I005	4850291	LCD MODULE
I006	0210000	UI BOARD MODULE
I007	4864573	LED
I008	9481097	UIP PWB ADHESIVE DMD110577
I009	9517286	LCD FRAME METALLIZED DMC06331
I010	5140263	MIC+BOOT ASSY
I011	9470283	SPEAKER FOAM
I012	5140253	SPEAKER
I013	9491277	UI MODULE ASSY DMC06332
I014	0202086	RADION MODULE
I015	9790974	VOLUMEKEY DMD10631
I016	9467107	ANTENNA FRAME ASSY DMC06244
I017	5400243	DC CONNECTOR
I018	6800057	VIBRATOR
I019	9511211	RELEASE SPRING DMD10705
I020	9790973	POWER KEY DMD10632
I021	9458971	C-COVER DMD10523
I022	9452502	RELEASE KEY DMD09302
I023	0670352	BATTERY BLD-3
I024	9790934	KEYMAT ASSY STROKE DARK GREY
	9790935	KEYMAT ASSY STROKE GREY

Parts List with Grid References (RH-20)

Item	Code	Side	X	Y	Type	Name	Value	
A356	9517242	Bottom	O	6	SHIELD_DMC05342	NECTAR J SHIELD AS DMC05342 NHL4J	~	~
A500	9517365	Bottom	K	3	SHIELD_DMC07017	HELGA J SHIELD AS DMC07017 NHL-4J	~	~
A700	9517259	Bottom	D	5	SHIELD_DMC05181	SHIELD ASSY PA DMC05075	~	~
A970	9517244	Bottom	I	7	SHIELD_DMC05410	C J SHIELD ASSY DMC05410 NHL-4J	~	~
B200	4510219	Top	P	7	CRYSTAL_CX_4V	CRYSTAL 32.768KHZ+-30PPM 9PF	32.768kHz	~
C100	2315201	Bottom	H	2	0405_2_P0.65	CHIP ARRAY NPO 2X27P K 25V 0405	2x27p	25V
C101	2320481	Top	R	5	0603C	CHIPCAP X5R 1U K 6V3 0603	1u0	6.3V
C102	2320481	Top	S	4	0603C	CHIPCAP X5R 1U K 6V3 0603	1u0	6.3V
C103	2321013	Top	P	6	0402C	CHIPCAP NPO 270P J 25V 0402	270p	25V
C104	2315201	Top	S	5	0405_2_P0.65	CHIP ARRAY NPO 2X27P K 25V 0405	2x27p	25V
C106	2320744	Top	Q	5	0402C	Chipcap X7R 10% 50V 0402	1n0	50V
C107	2320536	Top	S	7	0402C	Chipcap 5% NPO	10p	50V
C108	2320536	Top	S	7	0402C	Chipcap 5% NPO	10p	50V
C109	2320536	Top	R	7	0402C	Chipcap 5% NPO	10p	50V
C110	2320544	Top	R	5	0402C	Chipcap 5% NPO	22p	50V
C112	2320778	Top	S	4	0402C	Chipcap X7R 10% 16V 0402	10n	16V
C113	2320778	Top	R	6	0402C	Chipcap X7R 10% 16V 0402	10n	16V
C114	2320778	Top	S	6	0402C	Chipcap X7R 10% 16V 0402	10n	16V
C115	2320756	Top	Q	7	0402C	Chipcap X7R 10% 50V 0402	3n3	50V
C116	2320756	Top	R	7	0402C	Chipcap X7R 10% 50V 0402	3n3	50V
C117	2320536	Top	R	7	0402C	Chipcap 5% NPO	10p	50V
C118	2320778	Top	R	7	0402C	Chipcap X7R 10% 16V 0402	10n	16V
C119	2320778	Top	R	6	0402C	Chipcap X7R 10% 16V 0402	10n	16V
C150	2316001	Top	Q	6	0603C	CHIPCAP X5R 2U2 K 6V3 0603	2u2	6V3
C151	2315205	Top	R	5	0405_2_P0.65_AVX	CHIP ARRAY X5R 2X1N M 16V 0405	2x1n	16V
C152	2316001	Top	S	5	0603C	CHIPCAP X5R 2U2 K 6V3 0603	2u2	6V3
C153	2315209	Top	R	5	0405_2_P0.65_AVX	CHIP ARRAY X5R 2X33N M 10V 0405	2x33n	10V
C154	2315209	Top	Q	6	0405_2_P0.65_AVX	CHIP ARRAY X5R 2X33N M 10V 0405	2x33n	10V
C155	2315201	Top	P	6	0405_2_P0.65	CHIP ARRAY NPO 2X27P K 25V 0405	2x27p	25V
C156	2315205	Top	Q	6	0405_2_P0.65_AVX	CHIP ARRAY X5R 2X1N M 16V 0405	2x1n	16V
C157	2315201	Top	S	6	0405_2_P0.65	CHIP ARRAY NPO 2X27P K 25V 0405	2x27p	25V
C158	2315201	Top	R	6	0405_2_P0.65	CHIP ARRAY NPO 2X27P K 25V 0405	2x27p	25V
C159	2315201	Top	Q	7	0405_2_P0.65	CHIP ARRAY NPO 2X27P K 25V 0405	2x27p	25V
C160	2320805	Top	Q	5	0402C	CHIPCAP X5R 100N K 10V 0402	100n	10V
C161	2320805	Top	Q	6	0402C	CHIPCAP X5R 100N K 10V 0402	100n	10V
C162	2320805	Bottom	P	6	0402C	CHIPCAP X5R 100N K 10V 0402	100n	10V
C163	2320805	Bottom	M	6	0402C	CHIPCAP X5R 100N K 10V 0402	100n	10V
C164	2315205	Bottom	F	5	0405_2_P0.65_AVX	CHIP ARRAY X5R 2X1N M 16V 0405	2x1n	16V
C165	2320805	Bottom	P	6	0402C	CHIPCAP X5R 100N K 10V 0402	100n	10V
C166	2320481	Top	R	6	0603C	CHIPCAP X5R 1U K 6V3 0603	1u0	6.3V
C167	2320481	Top	Q	5	0603C	CHIPCAP X5R 1U K 6V3 0603	1u0	6.3V
C168	2320805	Bottom	P	6	0402C	CHIPCAP X5R 100N K 10V 0402	100n	10V
C169	2320805	Top	Q	5	0402C	CHIPCAP X5R 100N K 10V 0402	100n	10V
C170	2320805	Bottom	P	6	0402C	CHIPCAP X5R 100N K 10V 0402	100n	10V
C171	2320540	Top	Q	6	0402C	Chipcap 5% NPO	15p	50V
C173	2320556	Bottom	G	5	0402C	Chipcap 5% NPO	68p	50V
C174	2320556	Bottom	G	5	0402C	Chipcap 5% NPO	68p	50V
C200	2320805	Top	N	7	0402C	CHIPCAP X5R 100N K 10V 0402	100n	10V
C201	2320481	Top	M	7	0603C	CHIPCAP X5R 1U K 6V3 0603	1u0	6.3V
C202	2320778	Top	M	7	0402C	Chipcap X7R 10% 16V 0402	10n	16V
C203	2320481	Top	P	4	0603C	CHIPCAP X5R 1U K 6V3 0603	1u0	6.3V
C204	2320481	Bottom	M	7	0603C	CHIPCAP X5R 1U K 6V3 0603	1u0	6.3V
C205	2320481	Top	O	7	0603C	CHIPCAP X5R 1U K 6V3 0603	1u0	6.3V
C206	2320481	Top	O	7	0603C	CHIPCAP X5R 1U K 6V3 0603	1u0	6.3V
C207	2320481	Top	P	4	0603C	CHIPCAP X5R 1U K 6V3 0603	1u0	6.3V
C208	2320481	Top	N	7	0603C	CHIPCAP X5R 1U K 6V3 0603	1u0	6.3V
C209	2320536	Top	P	7	0402C	Chipcap 5% NPO	10p	50V
C210	2320536	Top	Q	7	0402C	Chipcap 5% NPO	10p	50V
C211	2320481	Top	O	7	0603C	CHIPCAP X5R 1U K 6V3 0603	1u0	6.3V
C212	2320481	Top	P	7	0603C	CHIPCAP X5R 1U K 6V3 0603	1u0	6.3V
C213	2320481	Top	O	7	0603C	CHIPCAP X5R 1U K 6V3 0603	1u0	6.3V
C214	2320481	Top	P	6	0603C	CHIPCAP X5R 1U K 6V3 0603	1u0	6.3V
C215	2320481	Top	P	6	0603C	CHIPCAP X5R 1U K 6V3 0603	1u0	6.3V
C218	2320805	Top	P	5	0402C	CHIPCAP X5R 100N K 10V 0402	100n	10V
C219	2320481	Top	N	7	0603C	CHIPCAP X5R 1U K 6V3 0603	1u0	6.3V
C220	2320778	Top	Q	5	0402C	Chipcap X7R 10% 16V 0402	10n	16V
C221	2320481	Top	M	7	0603C	CHIPCAP X5R 1U K 6V3 0603	1u0	6.3V
C222	2320481	Top	M	6	0603C	CHIPCAP X5R 1U K 6V3 0603	1u0	6.3V
C223	2320481	Top	L	6	0603C	CHIPCAP X5R 1U K 6V3 0603	1u0	6.3V

Item	Code	Side	X	Y	Type	Name	Value	
C224	2320481	Top	L	5	0603C	CHIPCAP X5R 1U K 6V3 0603	1u0	6.3V
C225	2320481	Top	M	6	0603C	CHIPCAP X5R 1U K 6V3 0603	1u0	6.3V
C226	2320481	Top	M	5	0603C	CHIPCAP X5R 1U K 6V3 0603	1u0	6.3V
C227	2320481	Top	L	5	0603C	CHIPCAP X5R 1U K 6V3 0603	1u0	6.3V
C228	2320481	Top	M	5	0603C	CHIPCAP X5R 1U K 6V3 0603	1u0	6.3V
C229	2320481	Top	L	5	0603C	CHIPCAP X5R 1U K 6V3 0603	1u0	6.3V
C230	2320481	Top	L	5	0603C	CHIPCAP X5R 1U K 6V3 0603	1u0	6.3V
C231	2320481	Top	M	5	0603C	CHIPCAP X5R 1U K 6V3 0603	1u0	6.3V
C232	2320481	Top	M	5	0603C	CHIPCAP X5R 1U K 6V3 0603	1u0	6.3V
C233	2320481	Top	M	6	0603C	CHIPCAP X5R 1U K 6V3 0603	1u0	6.3V
C234	2320481	Top	M	5	0603C	CHIPCAP X5R 1U K 6V3 0603	1u0	6.3V
C235	2320481	Top	P	7	0603C	CHIPCAP X5R 1U K 6V3 0603	1u0	6.3V
C236	2320805	Top	M	4	0402C	CHIPCAP X5R 100N K 10V 0402	100n	10V
C237	2320805	Top	M	4	0402C	CHIPCAP X5R 100N K 10V 0402	100n	10V
C238	2320805	Top	N	7	0402C	CHIPCAP X5R 100N K 10V 0402	100n	10V
C239	2320805	Top	Q	5	0402C	CHIPCAP X5R 100N K 10V 0402	100n	10V
C240	2320778	Top	Q	5	0402C	Chipcap X7R 10% 16V 0402	10n	16V
C241	2320744	Top	Q	5	0402C	Chipcap X7R 10% 50V 0402	1n0	50V
C242	2320744	Top	Q	5	0402C	Chipcap X7R 10% 50V 0402	1n0	50V
C243	2320481	Top	Q	5	0603C	CHIPCAP X5R 1U K 6V3 0603	1u0	6.3V
C260	2320481	Top	M	6	0603C	CHIPCAP X5R 1U K 6V3 0603	1u0	6.3V
C261	2320481	Top	O	7	0603C	CHIPCAP X5R 1U K 6V3 0603	1u0	6.3V
C262	2320481	Top	M	6	0603C	CHIPCAP X5R 1U K 6V3 0603	1u0	6.3V
C263	2320481	Top	M	6	0603C	CHIPCAP X5R 1U K 6V3 0603	1u0	6.3V
C264	2320481	Top	N	7	0603C	CHIPCAP X5R 1U K 6V3 0603	1u0	6.3V
C265	2320481	Top	Q	5	0603C	CHIPCAP X5R 1U K 6V3 0603	1u0	6.3V
C302	2320556	Top	K	6	0402C	Chipcap 5% NP0	68p	50V
C303	2320125	Top	L	7	0603C	CHIPCAP X5R 1U K 16V 0603	1u0	16V
C304	2320125	Top	L	7	0603C	CHIPCAP X5R 1U K 16V 0603	1u0	16V
C305	2320805	Top	L	6	0402C	CHIPCAP X5R 100N K 10V 0402	100n	10V
C306	2320778	Bottom	R	5	0402C	Chipcap X7R 10% 16V 0402	10n	16V
C310	2320544	Bottom	A	5	0402C	Chipcap 5% NP0	22p	50V
C350	2312243	Bottom	B	4	0805C	CHIPCAP X5R 4U7 K 6V3 0805	4u7	6V3
C352	2320805	Bottom	A	4	0402C	CHIPCAP X5R 100N K 10V 0402	100n	10V
C353	2320805	Bottom	B	3	0402C	CHIPCAP X5R 100N K 10V 0402	100n	10V
C357	2320778	Bottom	O	7	0402C	Chipcap X7R 10% 16V 0402	10n	16V
C358	2320785	Bottom	O	7	0402C	chipcap x7r 47n k 10v 0402	47n	10V
C359	2320805	Bottom	O	6	0402C	CHIPCAP X5R 100N K 10V 0402	100n	10V
C361	2320744	Bottom	M	6	0402C	Chipcap X7R 10% 50V 0402	1n0	50V
C362	2320778	Bottom	O	6	0402C	Chipcap X7R 10% 16V 0402	10n	16V
C363	2315261	Bottom	M	7	0405_2_P0.65	CHIP ARRAY X5R 2X47N K 10V 0405	2x47n	10V
C364	2321007	Bottom	N	5	0402C	CERCAP X7R 22N K 16V 0402	22n	16V
C365	2315209	Bottom	M	6	0405_2_P0.65_AVX	CHIP ARRAY X5R 2X33N M 10V 0405	2x33n	10V
C366	2320785	Bottom	M	7	0402C	chipcap x7r 47n k 10v 0402	47n	10V
C367	2320560	Bottom	O	8	0402C	Chipcap 5% NP0	100p	50V
C370	2320760	Bottom	O	7	0402C	Chipcap X7R 10% 25V 0402	4n7	25V
C371	2320778	Bottom	M	7	0402C	Chipcap X7R 10% 16V 0402	10n	16V
C372	2320481	Bottom	N	7	0603C	CHIPCAP X5R 1U K 6V3 0603	1u0	6.3V
C373	2321007	Bottom	M	5	0402C	CERCAP X7R 22N K 16V 0402	22n	16V
C374	2320744	Bottom	N	6	0402C	Chipcap X7R 10% 50V 0402	1n0	50V
C375	2320752	Bottom	N	5	0402C	Chipcap X7R 10% 50V 0402	2n2	50V
C378	2320546	Bottom	N	7	0402C	Chipcap 5% NP0	27p	50V
C379	2320552	Bottom	N	7	0402C	Chipcap 5% NP0	47p	50V
C390	2320805	Bottom	S	2	0402C	CHIPCAP X5R 100N K 10V 0402	100n	10V
C400	2320778	Top	P	3	0402C	Chipcap X7R 10% 16V 0402	10n	16V
C401	2320805	Top	P	4	0402C	CHIPCAP X5R 100N K 10V 0402	100n	10V
C402	2320778	Top	M	4	0402C	Chipcap X7R 10% 16V 0402	10n	16V
C403	2320778	Top	M	2	0402C	Chipcap X7R 10% 16V 0402	10n	16V
C404	2320778	Top	P	3	0402C	Chipcap X7R 10% 16V 0402	10n	16V
C405	2320778	Top	M	3	0402C	Chipcap X7R 10% 16V 0402	10n	16V
C420	2320560	Top	M	3	0402C	Chipcap 5% NP0	100p	50V
C421	2320560	Top	M	4	0402C	Chipcap 5% NP0	100p	50V
C422	2320560	Top	M	4	0402C	Chipcap 5% NP0	100p	50V
C450	2320778	Top	S	3	0402C	Chipcap X7R 10% 16V 0402	10n	16V
C451	2320805	Top	P	3	0402C	CHIPCAP X5R 100N K 10V 0402	100n	10V
C454	2320779	Top	Q	4	0603_BLM	CHIPCAP X7R 100N K 16V 0603	100n	16V
C470	2320546	Bottom	S	6	0402C	Chipcap 5% NP0	27p	50V
C471	2320546	Bottom	R	7	0402C	Chipcap 5% NP0	27p	50V
C472	2320546	Bottom	R	6	0402C	Chipcap 5% NP0	27p	50V
C501	2320744	Bottom	K	3	0402C	Chipcap X7R 10% 50V 0402	1n0	50V

Item	Code	Side	X	Y	Type	Name	Value	
C503	2320564	Bottom	K	2	0402C	Chipcap 5% NP0	150p	50V
C504	2322023	Bottom	K	2	0603C	CHIPCAP NP0 2N2 J 16V 0603	2n2	16V
C505	2321013	Bottom	K	2	0402C	CHIPCAP NP0 270P J 25V 0402	270p	25V
C507	2322023	Bottom	I	4	0603C	CHIPCAP NP0 2N2 J 16V 0603	2n2	16V
C511	2320560	Bottom	C	7	0402C	Chipcap 5% NP0	100p	50V
C512	2320592	Bottom	I	5	0402C	Chipcap 5% X7R	2n2	50V
C513	2322023	Bottom	I	5	0603C	CHIPCAP NP0 2N2 J 16V 0603	2n2	16V
C520	2320554	Bottom	J	5	0402C	Chipcap 5% NP0	56p	50V
C522	2320532	Bottom	J	5	0402C	Chipcap +-0.25pF NP0	6p8	50V
C523	2320598	Bottom	J	5	0402C	Chipcap 5% X7R	3n9	50V
C531	2320546	Bottom	F	5	0402C	Chipcap 5% NP0	27p	50V
C532	2320604	Bottom	I	4	0402C	Chipcap 5% NP0	18p	50V
C533	2320554	Bottom	I	4	0402C	Chipcap 5% NP0	56p	50V
C535	2320552	Bottom	K	4	0402C	Chipcap 5% NP0	47p	50V
C536	2320552	Bottom	K	4	0402C	Chipcap 5% NP0	47p	50V
C537	2320560	Bottom	K	5	0402C	Chipcap 5% NP0	100p	50V
C538	2320744	Bottom	K	3	0402C	Chipcap X7R 10% 50V 0402	1n0	50V
C540	2320491	Bottom	L	4	0603C	CHIPCAP X7R 220N K 10V 0603	220n	10V
C543	2320558	Bottom	L	3	0402C	Chipcap 5% NP0	82p	50V
C545	2315019	Bottom	J	2	0612_H0.94	CHIP ARRAY NP0 4X470P K 16V 0612	4x470p	~
C549	2320805	Bottom	J	3	0402C	CHIPCAP X5R 100N K 10V 0402	100n	10V
C550	2320568	Bottom	J	5	0402C	Chipcap 5% X7R	220p	50V
C551	2320546	Bottom	J	5	0402C	Chipcap 5% NP0	27p	50V
C552	2320805	Bottom	K	4	0402C	CHIPCAP X5R 100N K 10V 0402	100n	10V
C553	2320536	Bottom	K	4	0402C	Chipcap 5% NP0	10p	50V
C554	2320620	Bottom	L	4	0402C	Chipcap X7R 5% 16V 0402	10n	16V
C555	2320805	Bottom	K	3	0402C	CHIPCAP X5R 100N K 10V 0402	100n	10V
C560	2320536	Bottom	K	3	0402C	Chipcap 5% NP0	10p	50V
C568	2320907	Bottom	J	5	0402C_AVX	CHIPCAP NP0 HQ 0P7 B 16V 0402	0p7	16V
C570	2320544	Bottom	B	7	0402C	Chipcap 5% NP0	22p	50V
C571	2320560	Bottom	I	5	0402C	Chipcap 5% NP0	100p	50V
C572	2320560	Bottom	J	2	0402C	Chipcap 5% NP0	100p	50V
C574	2320536	Bottom	L	5	0402C	Chipcap 5% NP0	10p	50V
C575	2320526	Bottom	I	3	0402C	Chipcap +-0.25pF NP0	3p9	50V
C700	2320744	Bottom	F	3	0402C	Chipcap X7R 10% 50V 0402	1n0	50V
C701	2320744	Bottom	F	4	0402C	Chipcap X7R 10% 50V 0402	1n0	50V
C702	2320744	Bottom	D	2	0402C	Chipcap X7R 10% 50V 0402	1n0	50V
C703	2310045	Bottom	E	3	0402C GRM36	CHIPCAP X5R 68N K 10V 0402	68n	10V
C704	2310045	Bottom	D	2	0402C GRM36	CHIPCAP X5R 68N K 10V 0402	68n	10V
C705	2320546	Bottom	D	2	0402C	Chipcap 5% NP0	27p	50V
C706	2320546	Bottom	D	2	0402C	Chipcap 5% NP0	27p	50V
C707	2320518	Bottom	F	3	0402C	Chipcap +-0.25pF NP0	1p8	50V
C708	2320508	Bottom	I	4	0402C	Chipcap +-0.25pF NP0	1p0	50V
C709	2320540	Bottom	C	2	0402C	Chipcap 5% NP0	15p	50V
C710	2320540	Bottom	C	3	0402C	Chipcap 5% NP0	15p	50V
C711	2320522	Bottom	C	3	0402C	Chipcap +-0.25pF NP0	2p7	50V
C713	2320584	Bottom	E	3	0402C	Chipcap 5% X7R	1n0	50V
C714	2320584	Bottom	C	3	0402C	Chipcap 5% X7R	1n0	50V
C718	2320584	Bottom	F	5	0402C	Chipcap 5% X7R	1n0	50V
C719	2320584	Bottom	D	3	0402C	Chipcap 5% X7R	1n0	50V
C720	2320602	Bottom	D	5	0402C	Chipcap +-0.25pF NP0	4p7	50V
C723	2320540	Bottom	C	5	0402C	Chipcap 5% NP0	15p	50V
C724	2320778	Bottom	D	5	0402C	Chipcap X7R 10% 16V 0402	10n	16V
C725	2312243	Bottom	C	5	0805C	CHIPCAP X5R 4U7 K 6V3 0805	4u7	6V3
C726	2320546	Bottom	B	5	0402C	Chipcap 5% NP0	27p	50V
C727	2611745	Bottom	L	7	TANT_TPSY	CHIPTCAP 150U M 10V 7.3X4.3X2.0	150u_10V	10V
C728	2320560	Bottom	D	3	0402C	Chipcap 5% NP0	100p	50V
C729	2320554	Bottom	D	5	0402C	Chipcap 5% NP0	56p	50V
C730	2320546	Bottom	G	5	0402C	Chipcap 5% NP0	27p	50V
C804	2320560	Bottom	C	7	0402C	Chipcap 5% NP0	100p	50V
C805	2320560	Bottom	D	7	0402C	Chipcap 5% NP0	100p	50V
C806	2320544	Bottom	C	7	0402C	Chipcap 5% NP0	22p	50V
C807	2320560	Bottom	I	3	0402C	Chipcap 5% NP0	100p	50V
C808	2320560	Bottom	I	3	0402C	Chipcap 5% NP0	100p	50V
C809	2320552	Bottom	D	7	0402C	Chipcap 5% NP0	47p	50V
C826	2320520	Bottom	B	7	0402C	Chipcap +-0.25pF NP0	2p2	50V
C827	2320805	Bottom	C	8	0402C	CHIPCAP X5R 100N K 10V 0402	100n	10V
C828	2320540	Bottom	C	8	0402C	Chipcap 5% NP0	15p	50V
C829	2320514	Bottom	C	8	0402C	Chipcap +-0.25pF NP0	1p2	50V
C970	2320805	Bottom	G	7	0402C	CHIPCAP X5R 100N K 10V 0402	100n	10V

Item	Code	Side	X	Y	Type	Name	Value	
C971	2320546	Bottom	G	7	0402C	Chipcap 5% NP0	27p	50V
C972	2320778	Bottom	J	6	0402C	Chipcap X7R 10% 16V 0402	10n	16V
C973	2320481	Bottom	G	6	0603C	CHIPCAP X5R 1U K 6V3 0603	1u0	6.3V
C974	2320546	Bottom	G	6	0402C	Chipcap 5% NP0	27p	50V
C975	2320778	Bottom	I	7	0402C	Chipcap X7R 10% 16V 0402	10n	16V
C976	2320778	Bottom	J	7	0402C	Chipcap X7R 10% 16V 0402	10n	16V
C977	2320778	Bottom	I	7	0402C	Chipcap X7R 10% 16V 0402	10n	16V
C978	2320805	Bottom	I	6	0402C	CHIPCAP X5R 100N K 10V 0402	100n	10V
C979	2320778	Bottom	H	6	0402C	Chipcap X7R 10% 16V 0402	10n	16V
C980	2320778	Bottom	J	7	0402C	Chipcap X7R 10% 16V 0402	10n	16V
C981	2320778	Bottom	I	7	0402C	Chipcap X7R 10% 16V 0402	10n	16V
C982	2320481	Bottom	H	7	0603C	CHIPCAP X5R 1U K 6V3 0603	1u0	6.3V
C983	2316001	Bottom	H	6	0603C	CHIPCAP X5R 2U2 K 6V3 0603	2u2	6V3
C984	2316001	Bottom	G	7	0603C	CHIPCAP X5R 2U2 K 6V3 0603	2u2	6V3
D200	4370959	Top	O	5	uBGA168	UEMK_EDGE WDNA TO25 TFBGA168	~	~
D400	4375017	Top	N	3	uBGA144_CC	UPP8M V3.01B2 F751542A UBGA144	~	~
D450	4341501	Top	Q	3	COMBO_128MB_SI	COMBO128M NOR+8M SRAM TBGA48	128M/8M	~
D970	4370955	Bottom	J	7	uBGA_56	HW ACCELERATOR STV0900V3.2 6X6BGA	~	~
F100	5119019	Bottom	S	3	0603_FUSE	SM FUSE F 1.5A 32V 0603	1.5A	~
G300	4700131	Bottom	Q	6	XH414_I02N	CELL CAPACITOR 0.01MAH 3V3	3V3	~
G500	4350431	Bottom	L	2	VCO_FDK_IT_4	VCO 3296-3980MHZ FOUR 2.7V 20MA	3296-3980MHz	~
G501	4510417	Bottom	L	5	NKG3138C	VCTCXO 26MHZ +-1PPM	26MHz	~
L100	3203743	Top	R	4	0805_BLM21	FERR.BEAD 0R03 42R/100MHZ 3A 0805	42R/100MHz	~
L101	3203725	Top	S	5	FERRITE_0402	FERRITE BEAD 0R6 600R/100M 0402	600R/100MHz	~
L102	3203803	Top	R	7	0405_2_H1.0	CHIP BEAD ARRAY 2X1000R 0405	2x1000R/100MHz	~
L103	3203803	Top	S	6	0405_2_H1.0	CHIP BEAD ARRAY 2X1000R 0405	2x1000R/100MHz	~
L104	3203803	Top	R	7	0405_2_H1.0	CHIP BEAD ARRAY 2X1000R 0405	2x1000R/100MHz	~
L105	3645011	Top	S	7	COIL_LK_1608	CHIP COIL 68NH J Q12/100MHZ 0603	68nH	~
L106	3203725	Top	T	4	FERRITE_0402	FERRITE BEAD 0R6 600R/100M 0402	600R/100MHz	~
L107	3203741	Top	T	4	0603_BLM	FERRITE BEAD 0R5 600R/100MHZ 0603	600R/100MHz	~
L150	3203803	Top	A	3	0405_2_H1.0	CHIP BEAD ARRAY 2X1000R 0405	2x1000R/100MHz	~
L151	3645349	Bottom	F	5	COIL_0603CS	CHIP COIL 33NH G Q40/250MHZ 0603	33nH	~
L152	3645349	Bottom	F	4	COIL_0603CS	CHIP COIL 33NH G Q40/250MHZ 0603	33nH	~
L260	3203741	Top	M	6	0603_BLM	FERRITE BEAD 0R5 600R/100MHZ 0603	600R/100MHz	~
L261	3203741	Top	O	7	0603_BLM	FERRITE BEAD 0R5 600R/100MHZ 0603	600R/100MHz	~
L262	3203741	Top	M	6	0603_BLM	FERRITE BEAD 0R5 600R/100MHZ 0603	600R/100MHz	~
L263	3203741	Top	M	6	0603_BLM	FERRITE BEAD 0R5 600R/100MHZ 0603	600R/100MHz	~
L264	3203741	Top	M	7	0603_BLM	FERRITE BEAD 0R5 600R/100MHZ 0603	600R/100MHz	~
L265	3203741	Top	Q	5	0603_BLM	FERRITE BEAD 0R5 600R/100MHZ 0603	600R/100MHz	~
L300	3640119	Bottom	L	6	CHOKE_984FB	CHOKE 22U M 1R4 0.33A 3.3X3.3X1.5	22uH	~
L356	3645349	Bottom	O	7	COIL_0603CS	CHIP COIL 33NH G Q40/250MHZ 0603	33nH	~
L357	3645349	Bottom	O	7	COIL_0603CS	CHIP COIL 33NH G Q40/250MHZ 0603	33nH	~
L358	3645233	Bottom	N	7	COIL_JELF243Q	CHIP COIL 120N G Q32/150MHZ 0603	120nH	~
L470	3203725	Bottom	S	6	FERRITE_0402	FERRITE BEAD 0R6 600R/100M 0402	600R/100MHz	~
L471	3203725	Bottom	R	7	FERRITE_0402	FERRITE BEAD 0R6 600R/100M 0402	600R/100MHz	~
L472	3203725	Bottom	R	6	FERRITE_0402	FERRITE BEAD 0R6 600R/100M 0402	600R/100MHz	~
L500	3646011	Bottom	J	5	0402_ELJRF	CHIP COIL 4N7 +-0N3 Q7/100M 0402	4n7H	~
L501	3646011	Bottom	J	5	0402_ELJRF	CHIP COIL 4N7 +-0N3 Q7/100M 0402	4n7H	~
L502	3203725	Bottom	K	5	FERRITE_0402	FERRITE BEAD 0R6 600R/100M 0402	600R/100MHz	~
L700	3646069	Bottom	E	2	0402L	CHIP COIL 33N J Q23/800M 0402	33nH	~
L701	3646021	Bottom	F	2	0402_ELJRF	CHIP COIL 22N J Q7/100MHZ 0402	22nH	~
L702	3646053	Bottom	B	3	0402L	CHIP COIL 4N7 +-0N3 Q28/800M 0402	4n7H	~
L703	3203743	Bottom	C	5	0805_BLM21	FERR.BEAD 0R03 42R/100MHZ 3A 0805	42R/100MHz	~
L734	3646065	Bottom	D	6	0402L	CHIP COIL 12N J Q31/800M 0402	12nH	~
L800	3646047	Bottom	C	7	0402L	CHIP COIL 3N3 +-0N3 Q28/800M 0402	3n3H	~
L805	3646055	Bottom	I	3	0402L	CHIP COIL 8N2 J Q28/800MHZ 0402	8n2H	~
L809	3646067	Bottom	J	2	0402L	CHIP COIL 18N J Q29/800M 0402	18nH	~
L810	3646067	Bottom	I	2	0402L	CHIP COIL 18N J Q29/800M 0402	18nH	~
L824	3646047	Bottom	B	7	0402L	CHIP COIL 3N3 +-0N3 Q28/800M 0402	3n3H	~
L838	3646051	Bottom	I	3	0402L	CHIP COIL 3N9 +-0N3 Q28/800M 0402	3n9H	~
L839	3646051	Bottom	I	3	0402L	CHIP COIL 3N9 +-0N3 Q28/800M 0402	3n9H	~
N100	4341063	Top	S	4	SOT23_5_H1.2	REG 2.8V/150MA LP3985 SOT23-5	~	2.8V
N150	4341417	Top	R	6	USMD18_ST_NSC	AF AMP 85MW 5V LM4855ITLX USMD18	~	~
N300	4341309	Top	L	6	SOT23L_8	DC/DC CONV 350MA TK11851 SSOP8	~	~
N350	4860121	Bottom	A	2	IRDA_RPM960	IRDA RPM960-H7 1.152MB/S >2.4V 8PIN	~	~
N356	4341427	Bottom	N	6	HVQFN40	FM RECEIVER TEA5767HN LQFP40	~	~
N500	4370949	Bottom	J	4	uBGA_108_P0.5	HELGO73A TFBGA108	~	~
N700	4350427	Bottom	D	4	PW AMP_RF9219E1	PW AMP PF09003BN 900/1800/1900MHZ	~	~
N970	4341485	Bottom	H	7	USMD5_1.442X1.087_H0.675	REG 1.8V/150MA (LP2985ITLX) USMD5	~	1.8V
R100	1430726	Top	T	5	0402R	Resistor 5% 63mW	100R	~

Item	Code	Side	X	Y	Type	Name	Value	
R101	1430726	Top	S	5	0402R	Resistor 5% 63mW	100R	~
R102	1430726	Top	T	5	0402R	Resistor 5% 63mW	100R	~
R103	4120011	Top	T	5	uBGA5	ZDIX4 IP4043CX5 CA 14V2 10W CSP5	~	~
R104	1430812	Top	S	5	0402R	Resistor 5% 63mW	220k	~
R105	1825133	Top	S	6	0402 VAR	CHIP VARISTOR VWM14V VC50V 0402	14V/50V	~
R106	1825133	Top	R	6	0402 VAR	CHIP VARISTOR VWM14V VC50V 0402	14V/50V	~
R107	1825133	Top	R	6	0402 VAR	CHIP VARISTOR VWM14V VC50V 0402	14V/50V	~
R108	1825133	Top	R	6	0402 VAR	CHIP VARISTOR VWM14V VC50V 0402	14V/50V	~
R109	1430804	Top	P	5	0402R	Resistor 5% 63mW	100k	~
R111	1430804	Top	R	4	0402R	Resistor 5% 63mW	100k	~
R151	1825133	Top	A	3	0402 VAR	CHIP VARISTOR VWM14V VC50V 0402	14V/50V	~
R152	1825133	Top	B	3	0402 VAR	CHIP VARISTOR VWM14V VC50V 0402	14V/50V	~
R153	1430137	Top	Q	6	0402R	CHIPRES 0W06 1K0 F 200PPM 0402	1k0	~
R154	1430137	Top	Q	6	0402R	CHIPRES 0W06 1K0 F 200PPM 0402	1k0	~
R155	1620105	Top	Q	6	MNR02	RES NETWORK 0W06 2X2k2 J 0404	2x2k2	~
R156	1430762	Top	S	5	0402R	Resistor 5% 63mW	2k2	~
R157	1620105	Top	S	5	MNR02	RES NETWORK 0W06 2X2k2 J 0404	2x2k2	~
R158	1825133	Top	R	6	0402 VAR	CHIP VARISTOR VWM14V VC50V 0402	14V/50V	~
R159	1825133	Top	Q	7	0402 VAR	CHIP VARISTOR VWM14V VC50V 0402	14V/50V	~
R163	1430764	Top	Q	6	0402R	Resistor 5% 63mW	3k3	~
R164	1430700	Top	R	5	0402R	Resistor 5% 63mW	10R	~
R165	1430700	Top	R	6	0402R	Resistor 5% 63mW	10R	~
R166	1430700	Top	R	6	0402R	Resistor 5% 63mW	10R	~
R167	1430700	Top	R	6	0402R	Resistor 5% 63mW	10R	~
R171	1430734	Top	S	5	0402R	Resistor 5% 63mW	220R	~
R172	1430734	Bottom	P	5	0402R	Resistor 5% 63mW	220R	~
R173	1430754	Top	Q	6	0402R	Resistor 5% 63mW	1k0	~
R200	1414605	Top	N	7	0805R THERM1	CHIPRES 0W25 0R22 J 0805	0R22	~
R202	1620043	Top	P	5	EXB28V	RES NETWORK 0W03 4X100K J 0804	4x100k	~
R206	1430770	Top	P	5	0402R	Resistor 5% 63mW	4k7	~
R207	1430770	Top	P	5	0402R	Resistor 5% 63mW	4k7	~
R300	1430712	Top	K	7	0402R	Resistor 5% 63mW	27R	~
R302	1430726	Top	L	3	0402R	Resistor 5% 63mW	100R	~
R304	1825133	Bottom	H	2	0402 VAR	CHIP VARISTOR VWM14V VC50V 0402	14V/50V	~
R305	1825133	Bottom	A	5	0402 VAR	CHIP VARISTOR VWM14V VC50V 0402	14V/50V	~
R306	1430778	Bottom	A	5	0402R	Resistor 5% 63mW	10k	~
R307	1825133	Top	L	4	0402 VAR	CHIP VARISTOR VWM14V VC50V 0402	14V/50V	~
R308	1430740	Bottom	B	6	0402R	Resistor 5% 63mW	330R	~
R309	1430740	Bottom	B	6	0402R	Resistor 5% 63mW	330R	~
R310	1430690	Top	L	7	0402R	Chipres 0W06 jumper 0402	0R	~
R311	1430690	Top	L	6	0402R	Chipres 0W06 jumper 0402	0R	~
R312	1825133	Bottom	G	2	0402 VAR	CHIP VARISTOR VWM14V VC50V 0402	14V/50V	~
R350	1413850	Top	B	2	0805R THERM1	CHIPRES 0W125 4R7 J 0805	4R7	~
R357	1430792	Bottom	O	6	0402R	Resistor 5% 63mW	33k	~
R359	1430778	Bottom	O	7	0402R	Resistor 5% 63mW	10k	~
R360	1430804	Bottom	O	7	0402R	Resistor 5% 63mW	100k	~
R361	1620019	Bottom	O	6	0404 R_SR	RES NETWORK 0W06 2X10K J 0404	2x10k	~
R367	1430786	Bottom	M	7	0402R	Resistor 5% 63mW	18k	~
R369	1430792	Bottom	M	5	0402R	Resistor 5% 63mW	33k	~
R388	4120071	Top	Q	4	uBGA8	ASIP EMIF03-SIM01 SIM FILTER BGA8	~	~
R420	1430726	Top	M	3	0402R	Resistor 5% 63mW	100R	~
R421	1430778	Top	M	4	0402R	Resistor 5% 63mW	10k	~
R422	1430873	Top	L	4	0402R	CHIPRES 0W06 27K F 0402	27k	~
R423	1430778	Top	L	4	0402R	Resistor 5% 63mW	10k	~
R450	1430770	Top	Q	4	0402R	Resistor 5% 63mW	4k7	~
R500	1430693	Bottom	L	3	0402R	Chipres 0W06 5R6 J 0402	5R6	~
R501	1430754	Bottom	K	2	0402R	Resistor 5% 63mW	1k0	~
R502	1430337	Bottom	J	2	0603R	CHIPRES 0W06 9K1 F 0603	9k1	~
R503	1430770	Bottom	I	4	0402R	Resistor 5% 63mW	4k7	~
R504	1430780	Bottom	I	4	0402R	Resistor 5% 63mW	12k	~
R505	1430770	Bottom	I	4	0402R	Resistor 5% 63mW	4k7	~
R507	1430756	Bottom	I	5	0402R	Resistor 5% 63mW	1k2	~
R516	1620033	Bottom	L	4	0404 R	RES NETWORK 0W06 2X5K6 J 0404	2x5k6	~
R517	1620033	Bottom	L	4	0404 R	RES NETWORK 0W06 2X5K6 J 0404	2x5k6	~
R520	1430774	Bottom	L	4	0402R	Resistor 5% 63mW	6k8	~
R522	1430784	Bottom	L	3	0402R	Resistor 5% 63mW	15k	~
R523	1430865	Bottom	K	3	0402R	CHIPRES 0W06 5K6 F 0402	5k6	~
R524	1620063	Bottom	J	5	MNR04	RES NETWORK 0W06 4X100K J 0804	4x100R	~
R525	1430770	Bottom	J	2	0402R	Resistor 5% 63mW	4k7	~
R531	1430726	Bottom	I	5	0402R	Resistor 5% 63mW	100R	~

Item	Code	Side	X	Y	Type	Name	Value	
R540	1430754	Bottom	C	7	0402R	Resistor 5% 63mW	1k0	~
R541	1430726	Bottom	I	5	0402R	Resistor 5% 63mW	100R	~
R700	1430700	Bottom	F	3	0402R	Resistor 5% 63mW	10R	~
R701	1430700	Bottom	F	4	0402R	Resistor 5% 63mW	10R	~
R702	1430700	Bottom	D	2	0402R	Resistor 5% 63mW	10R	~
R703	1430714	Bottom	E	3	0402R	Resistor 5% 63mW	33R	~
R704	1430714	Bottom	D	2	0402R	Resistor 5% 63mW	33R	~
R706	1430681	Bottom	F	2	0402R	CHIPRES 0W06 4R3 J 0402	4R3	~
R709	1430690	Bottom	F	4	0402R	Chipres 0W06 jumper 0402	0R	~
R710	1430758	Bottom	F	4	0402R	Resistor 5% 63mW	1k5	~
R714	1430691	Bottom	D	3	0402R	CHIPRES 0W06 2R2 J 0402	2R2	~
R715	1430691	Bottom	E	2	0402R	CHIPRES 0W06 2R2 J 0402	2R2	~
R750	1430690	Bottom	C	3	0402R	Chipres 0W06 jumper 0402	0R	~
R800	1430700	Bottom	C	8	0402R	Resistor 5% 63mW	10R	~
R801	1430746	Bottom	C	7	0402R	Resistor 5% 63mW	560R	~
R970	1430770	Bottom	I	6	0402R	Resistor 5% 63mW	4k7	~
R971	1430770	Bottom	I	6	0402R	Resistor 5% 63mW	4k7	~
R972	1430778	Bottom	J	7	0402R	Resistor 5% 63mW	10k	~
R973	1430784	Bottom	I	7	0402R	Resistor 5% 63mW	15k	~
R974	1430726	Bottom	I	6	0402R	Resistor 5% 63mW	100R	~
R975	1430726	Bottom	J	6	0402R	Resistor 5% 63mW	100R	~
S300	5209001	Bottom	D	1	BUTTON_EVQPUA02	SM SW TACT SPST 12V 50MA SIDE KEY	~	~
S301	5209001	Bottom	G	1	BUTTON_EVQPUA02	SM SW TACT SPST 12V 50MA SIDE KEY	~	~
S302	5200025	Bottom	A	6	SWITCH_SKRE	SM TACT SW SIDE TRAVEL 0.2MM	~	~
T500	4550187	Bottom	L	3	TRANS_LDB213	TRANSF BALUN 3600MHZ+-400MHZ	~	~
T700	4550223	Bottom	C	3	TRANS_LDB15	TRANSF BALUN 1800+-100mhz 2x1.25	~	~
T701	4550165	Bottom	D	7	TRANS_LDB15	TRANSF BALUN 1.9GHZ+-100MHZ 2X1.25	~	~
V100	4113721	Top	R	4	CASE_457	TVS DI 1PMT16AT3 16V 175W PWRMITE	~	~
V300	4110475	Top	L	6	EMD2	SCH DI RB521S-30 200MA 35V SOD523	~	~
V356	4110965	Bottom	O	7	SOD_523	CAP.DI BB202 CT=2.5 FM 0R8 SOD523	~	~
V357	4110965	Bottom	O	7	SOD_523	CAP.DI BB202 CT=2.5 FM 0R8 SOD523	~	~
V802	4210261	Bottom	C	7	SOT_363	TR BGA428 LNA1.8GHZ 19.5DB SOT363	~	~
X100	5409141	Bottom	G	4	CONN_T_297449C	SM BATTERY CONN 4POL SPR. 12V 2A	~	~
X101	5460061	Bottom	T	5	SYSCON_MQ202_NK_14R3_VJ	SM SYSTEM CONNECTOR 14POL	~	~
X301	5469135	Top	L	2	CPBT_297884_6	SM CONN 2X8 SPR 50V 0.5A PCB/PCB	~	~
X302	5469175	Top	B	6	CON_DF23C_10DS	SM CONN BTB 2X5 F P0.5	~	~
X386	5400085	Bottom	P	3	SIM_READER_HD940	SIM CARD READER 2X3POL P2.54 SM	~	~
X970	5409259	Bottom	F	7	CLE9014_01E	SM CONN 2X7F P1.4 CAMERA CIF-J	~	~
Z300	4120031	Top	M	2	uBGA24	EMI/ESD FILT EMIF10-1K010F1 BGA24	~	~
Z700	4511407	Bottom	E	2	FILTER_FAR_F5CQ	SAW FILTER 897.5+-17.5MHZ 2X2.5	897.5MHz	~
Z800	4550263	Bottom	C	6	ANT_SW_6.9X5.2	ANT SW 850/900/1800/1900 6.7X5	~	~
Z806	4511405	Bottom	B	6	FILTER_SXS144A2	SAW FILT 1960+-30MHZ /5DB 2.5X2.0MM	1960MHz	~
Z808	4511413	Bottom	I	2	FILTER_FAR_F6CQ	SAW FILT 1842.5+-37.5MHZ 2.5X2MM	1842.5MHz	~
Z809	4511411	Bottom	I	2	FILTER_FAR_F5CQ	SAW FILT 942.5+-17.5MHZ 2.5X2.0MM	942.5MHz	~